

COLLECTION and DISTRIBUTION of MICHIGAN ROAD-USER FEES

Under Act 51 of 1951 as amended, and related acts.

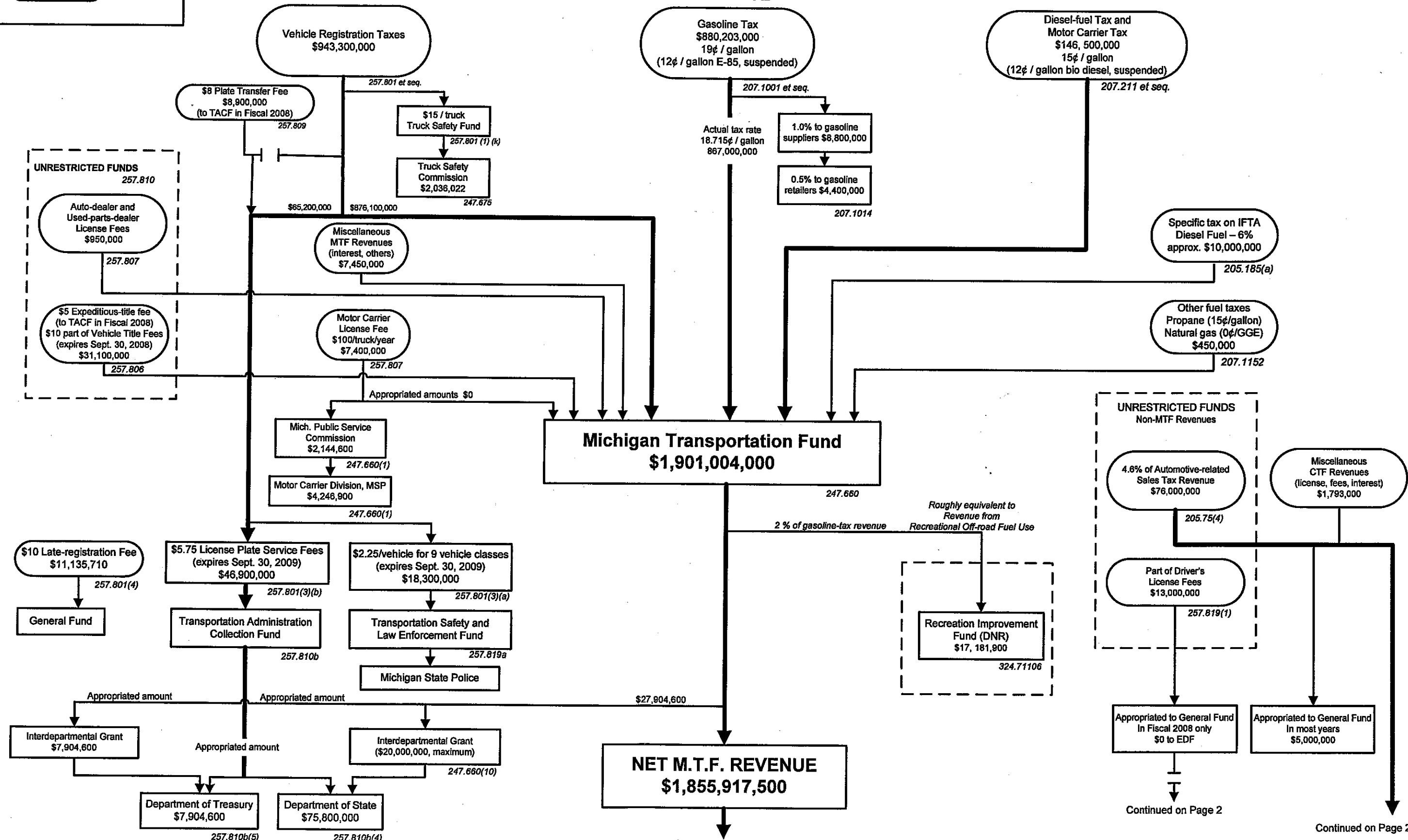
State funds only, federal aid not shown. Edition of April 17, 2008.

Showing amounts for Fiscal 2008, as appropriated, based on ERFD estimates of December 20, 2007, Fiscal 2008 budgets, license-plate revenues for Fiscal 2007, and other sources.

LEGEND

Annual amounts over \$50 million dollars in in bold lines: **_____**

Revenue sources



Continued on Page 2

Continued on Page 2

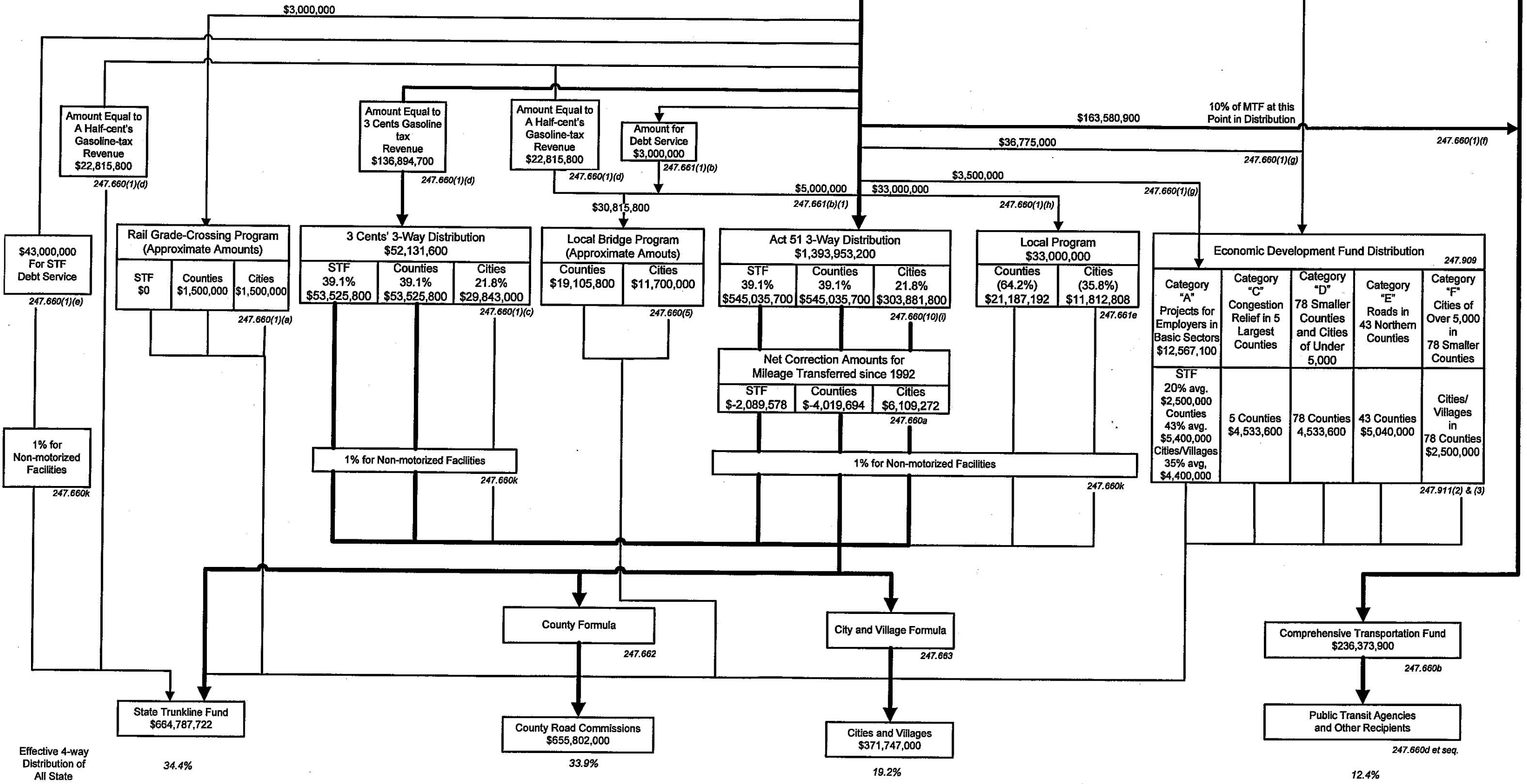
LEGEND

Annual amounts over \$50 million dollars in in bold lines: **_____**

Revenue sources: **_____**

NET M.T.F. REVENUE
\$1,855,917,500

DISTRIBUTION



Effective 4-way Distribution of All State Revenues

34.4%

33.9%

19.2%

12.4%